



2023 Touring Caravan Range



10 / TEN YEAR WATER INGRESS & BODY INTEGRITY WARRANTY



www.elddis.co.uk



Introducing the Xplore 2023 Range

Built on the very same production line as sister-brands Eddis, Compass and flagship Buccaneer, with the same state-of-the-art technology and detailed craftsmanship, Xplore offers a truly unbeatable package.

Whilst boasting competitive specification, Xplore remains super-lightweight and exceptionally easy-to-tow. Xplore is built with SoLiD Construction yet priced to compete with the used caravan market... the new Xplore range is, quite simply, unbeatable!

Choose from 4 exciting Xplore models...



- 05 Overview
- 06 Key Features
- 08 Technology
- 09 Interior Options
- 10 Layout Options
- 12 Community
- 14 SoLiD Construction



Advanced Engineering Technology



XPLORE 554

 **Xplore**

Modern. Lightweight.
Affordable.



Xplore is one of the most innovative lightweight value caravan ranges available today. Every model is compact, yet the Xplore's diminutive size belies the spacious and ingenious storage within. With style and specification challenging its 'budget' price tag, Xplore offers a fresh alternative to buying used!



Key Features

- ✓ Space-saving Whale heating - runs on gas or electric with quiet night-time setting - internally ducted heating throughout including bathrooms
- ✓ Grade III Thermal Insulation for guaranteed all weather comfort
- ✓ Fixed bed mattresses are lightweight, yet super-supportive with soft-touch Argentum+ anti-bacterial and anti-allergy technology with Silver
- ✓ Whale Duo Control combination controller
- ✓ Combination oven and grill
- ✓ Black gloss enamelled 3 burner gas hob including high speed multi-function burner (for wok or large frying pan), spark ignition, flame failure protection, auto gas shut-off and glass lid creating additional work surface
- ✓ Black gloss enamelled sink with glass lid creating additional work surface and removable drainer
- ✓ Teleco Teleplus X2/39U directional aerial
- ✓ LED awning light
- ✓ LED reading lights
- ✓ Contemporary switches, sockets and surrounds
- ✓ 6'5" Headroom
- ✓ Balanced wheels for even wear and better fuel consumption
- ✓ Full height, high gloss, stone chip resistant front panel (lightweight composite) with single panoramic opening window
- ✓ Full height high gloss rear panel with road lights
- ✓ Extra large gas locker compartment for 2 gas bottles, with fitted gas regulator
- ✓ Fully lined shower cubicle (Excluding 304)
- ✓ Ashton craftsman built cabinetry with Tweed co-ordinating trim. Includes traditional dove-tailed drawers, flat-front 'Quiet-Close' overhead lockers and flush-fit kitchen units - all with concealed positive locking
- ✓ Durable Taupe Grey worktops throughout, including bathroom unit tops
- ✓ Rapid Heat 8L Whale water heater
- ✓ Side marker lights
- ✓ Domestic style bathroom door with high quality privacy lock
- ✓ Chrome-effect bathroom accessories, plus additional towel hooks
- ✓ Dometic series 10 fridge
- ✓ Optional Mobile internet & WiFi system
- ✓ Optional TV bracket (Layout specific)
- ✓ Contemporary Maluku upholstery with ActivCare protected hi-performance, lightweight construction, with co-ordinating scatter cushions and bolsters as standard
- ✓ Removable carpet runner Revolution Tweed in Pebble
- ✓ Ecocamel Orbit water-saving Halo shower head with built-in Aircore technology



XPLORE 585



XPLORE 304



XPLORE 585



XPLORE 554



Simple. Effective. Efficient.

Simple, yet highly-effective Whale heating and hot water systems ensure the Xplore is suitable for year-round use, with certified Grade III Thermal Insulation.

The heating system is underslung, so there's no compromise on interior storage space either. Other practical technologies includes ActivCare protected, hi-performance upholstery for optimum comfort at all times.



All Xplore caravans are built with fully-bonded SoLiD construction

10 / TEN YEAR WATER INGRESS & BODY INTEGRITY WARRANTY

All Xplore caravans come with 10 Year Water Ingress & Body Integrity Warranty.



Technology Features

✓

AL-KO galvanised steel chassis with Euro-axle and AL-KO Euro overrun device with two-way assisted handbrake

✓

GRP underskin to caravan floor providing a water resistant barrier

✓

Revolutionary StrongLite high-strength aluminium one-piece sides, in Carrara White. Up to 40% stronger and 30% lighter

✓

No-Screws fully-bonded SoLiD awning rails

✓

Reinforced step on hitch cover making windows easier to clean

✓

Fully protected mains electric system with up to seven 230V sockets



Pretty. Practical. Protected.

Change the look and feel of your Xplore with a choice of interior soft furnishings.

The Maluku upholstery is standard with the Xplore model and is supplied with co-ordinating scatter cushions and bolster cushions as standard.

Alternatively you can opt for fabric schemes from our Elddis Avante or Compass Casita caravan ranges in your Xplore*. Whichever fabric you choose, you can also opt for wraparound seating in the front lounge. This option allows you to keep the chest of drawers, so you can switch up the layout as you like! (excl. L-shape 304).

* Please note that, should you choose an alternative fabric scheme, the shape of your base vehicle's seating and armrest construction remains the same. The optional upholstery change includes: base cushion covering; scatter cushions; curtains and tie-backs.



ActivCare® Technology
All fabric ranges benefit from ActivCare premium quality stain-free technology.

STANDARD: MALUKU FABRIC UPHOLSTERY



OPTIONAL: HAVANA FABRIC



OPTIONAL: ROSELLA FABRIC



OPTIONAL: CO-ORDINATED BEDDING SET AVAILABLE



OPTIONAL: HYPNOS MATTRESS UPGRADE



Please refer to the full price list for details of all options.

Appealing. Exciting. Affordable.

Choose from 4 exceptional Xplore models, all available from your nearest approved Xplore Caravan Retailer.



Detailed 360 Tours of every model online now www.elddis.co.uk



Find your perfect caravan and Get Your Quote at www.elddis.co.uk

304

4 Berth
Single Axle



Diminutive in size, the Xplore 304 still boasts plentiful specification and storage thanks to its innovative underslung heating.

Equally popular as a 2 or 4 berth, the neat little 304 is a consistent best-seller!

422

2 Berth
Single Axle



A deceptively spacious 2 berth model. Lightweight and easy to tow, yet tardis-like inside!

The roomy lounge converts into a large double bed, with a fully equipped side-bathroom and a beautifully lit kitchen and dresser spanning the rear of this nifty model.

554

4 Berth
Single Axle

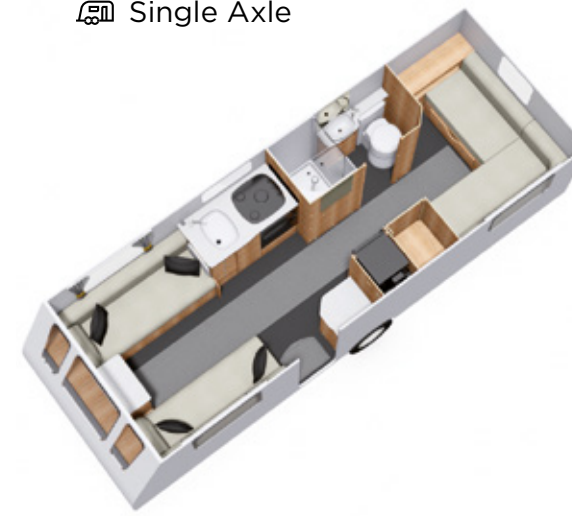


Our most popular layout, in its lightest form – the Xplore 554.

The Xplore 554 benefits from a large and comfy retractable transverse island bed, with a well-equipped bathroom spanning the full width at the rear. The bright airy lounge has bags of appeal, it too providing a double bed at night.

585

5 Berth
Single Axle



The Xplore 585 is a flexible, family friendly caravan.

The front lounge has parallel seating - perfect for mealtimes - and converts to a sizeable double bed. The L-Shape rear lounge is the perfect space for the kids to call their own. The rear lounge can be made into a double bed, with or without the pop-up bunk above, or can be used as a single bed with pop-up bunk. Alternate, depending on who you're travelling with!

Explore the world. Feel the thrills. Share the joy.

For all the latest Xplore news, views, videos, reviews and holiday inspiration follow us on Social Media:



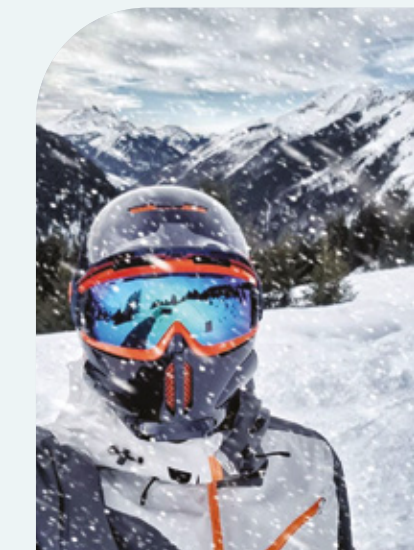
@_Elddis_



@ElddisCompassBuccaneerXplore



@elddis_compass_buccaneerxplore





TECHNOLOGY PARTNERS



The most advanced technology used in touring caravan engineering.



Strong

SoLiD Construction means our caravans offer industry leading integrity and rigidity.



Light

Fully bonded construction enables lighter vehicles which improves fuel consumption.



Dry

Waterproof joints and 95% fewer exterior screws create an impenetrable water barrier.



The first and only fully-bonded construction system for touring caravans. SoLiD Construction uses a chemical bonding process which is used in Formula 1, aircraft and marine construction.

Find out more by visiting www.elddis.co.uk/about



Xplore

10 / TEN YEAR WATER INGRESS & BODY INTEGRITY WARRANTY

Our Suppliers



Every one of our leisure vehicles proudly carries the NCC approved badge of quality. Elddis, Compass, Xplore and Buccaneer are trademarks of Erwin Hymer Group UK Ltd. Company Registration No. 02433663 England & Wales.

This brochure does not constitute an offer by Erwin Hymer Group UK Ltd. Erwin Hymer Group UK Ltd reserves the right to, and does alter from time to time, technical specifications, prices and model ranges as materials, model improvements and conditions require, and can accept no responsibility for discrepancies between these and subsequent models shown. This brochure is for guidance purposes only. Please be sure to check our full current and technical specifications with your retailer before placing your order. Please note that Approved Retailers are not the agents of Erwin Hymer Group UK Ltd. Accordingly they have no authority to bind Erwin Hymer Group UK Ltd or to make any representation or undertaking whatsoever on behalf of Erwin Hymer Group UK Ltd. Props shown in this brochure are for photographic purposes only and are not included in the specification. Bed covers and additional scatter cushions shown are for demonstration purposes only, similar co-ordinating sets are available to purchase from your Erwin Hymer Group UK Ltd retailer. Elddis, Compass, Xplore and Buccaneer products are covered against water ingress damage for 10 years from the original date of purchase of a new product. This applies to water ingress through any permanently sealed seam joints. If you purchase this vehicle as a used vehicle it may be possible to transfer the unexpired term of the warranty cover (up to a maximum of six years commencing at the original date of purchase from new). Full Terms and Conditions, including service intervals and exclusions can be found on the Elddis website www.elddis.co.uk or by telephoning Erwin Hymer Group UK Ltd Customer Care Team.



This isn't the end...
it's the beginning of a
brand new adventure!

Choose Xplore and you join a growing community of caravanning friends. Join in and share your news, views and tips on one (or all!) of our Social Media channels.

#FunStartsHere



@_Elddis_



@ElddisCompassBuccaneerXplore



@elddis_compass_buccaneerxplore



10 / TEN YEAR WATER INGRESS &
BODY INTEGRITY WARRANTY