



Elddis

2013 Prices & Specifications

RRP

On the Road charge*

Base Vehicle Motorhome Chassis

Engine Capacity
 Engine power output (BHP)
 No. of Berths / Seats with designated seatbelts
 Exterior Length
 Overall Width including wing mirrors
 Overall Body Width
 Overall Height
 Minimum Headroom
 Interior Width
 Tyre Size
 Tyre Pressure at Psi - Front
 - Rear

Overhead Cab Bed

Centre Beds

Rear Beds

Maximum Front Axle Weight
 Maximum Rear Axle Weight
 Maximum Towing Limit
 Mass in Running Order (MIRO)
 Personal Effects Payload
 Conventional Load
 Optional Equipment Payload
 Maximum User Payload
 M.T.P.L.M.

autoquest



115
£33,299

£1,350

Peugeot Boxer 333 L1
 110 bhp Tempo Libero 2.2L
 110 bhp
 2/2
 5707mm / 18'9"
 2690mm / 8'10"
 2200mm / 7'2"
 3010mm / 9'10"
 1950mm / 6'5"
 2074mm / 6'10"
 215/70 R15C 109 S
 60 Psi
 65 Psi

N/A

1 x Double
 2074mm x 1337mm
 / 6'10" x 4'4" - OR -
 2 x Single
 1850mm x 700mm
 / 6'1" x 2'3"

N/A

1750kgs / 34.38cwt
 1900kgs / 37.32cwt
 2000kgs / 39.28cwt
 2650kgs / 52.05cwt
 77kgs / 1.51cwt
 75kgs / 1.47cwt
 498kgs / 9.78cwt
 650kgs / 12.76cwt
 3300kgs / 64.82cwt



130
£34,699

£1,350

Peugeot Boxer 333 L2
 110 bhp Tempo Libero 2.2L
 110 bhp
 4/4
 6170mm / 20'3"
 2690mm / 8'10"
 2200mm / 7'2"
 3010mm / 9'10"
 1950mm / 6'5"
 2074mm / 6'10"
 215/70 R15C 109 S
 60 Psi
 65 Psi

1 x Double
 2050mm x 1330mm
 / 6'8" x 4'4"

1 x Double
 1845mm x 1242mm
 / 6'1" x 4'0"

N/A

1750kgs / 34.38cwt
 1900kgs / 37.32cwt
 2000kgs / 39.28cwt
 2825kgs / 55.49cwt
 112kgs / 2.20cwt
 225kgs / 4.42cwt
 138kgs / 2.71cwt
 475kgs / 9.33cwt
 3300kgs / 64.82cwt



140
£34,699

£1,350

Peugeot Boxer 333 L2
 110 bhp Tempo Libero 2.2L
 110 bhp
 2/2
 6295mm / 20'8"
 2690mm / 8'10"
 2200mm / 7'2"
 3010mm / 9'10"
 1950mm / 6'5"
 2074mm / 6'10"
 215/70 R15C 109 S
 60 Psi
 65 Psi

N/A

N/A

1 x Double
 2074mm x 1824mm
 / 6'10" x 6'0" - OR -
 2 x Single
 1824mm x 700mm
 / 6'0" x 2'3"

1750kgs / 34.38cwt
 1900kgs / 37.32cwt
 2000kgs / 39.28cwt
 2740kgs / 53.82cwt
 83kgs / 1.63cwt
 75kgs / 1.47cwt
 400kgs / 7.85cwt
 560kgs / 11.00cwt
 3300kgs / 64.82cwt



145
£35,599

£1,350

Peugeot Boxer 333 L2
 110 bhp Tempo Libero 2.2L
 110 bhp
 4/4
 6295mm / 20'8"
 2690mm / 8'10"
 2200mm / 7'2"
 3010mm / 9'10"
 1950mm / 6'5"
 2074mm / 6'10"
 215/70 R15C 109 S
 60 Psi
 65 Psi

1 x Double
 2050mm x 1330mm
 / 6'8" x 4'4"

N/A

1 x Double
 2074mm x 1350mm
 / 6'9" x 4'4"

1750kgs / 34.38cwt
 1900kgs / 37.32cwt
 2000kgs / 39.28cwt
 2870kgs / 56.37cwt
 103kgs / 2.02cwt
 225kgs / 4.42cwt
 102kgs / 2.00cwt
 430kgs / 8.44cwt
 3300kgs / 64.82cwt



155
£35,599

£1,350

Peugeot Boxer 333 L2S
 110 bhp Tempo Libero 2.2L
 110 bhp
 2/2
 7201mm / 23'7"
 2690mm / 8'10"
 2200mm / 7'2"
 3010mm / 9'10"
 1950mm / 6'5"
 2074mm / 6'10"
 215/70 R15C 109 S
 60 Psi
 65 Psi

N/A

N/A

Fixed Bed
 1 x Double
 1920mm x 1350mm
 / 6'4" x 4'5"

1750kgs / 34.38cwt
 1900kgs / 37.32cwt
 2000kgs / 39.28cwt
 2931kgs / 57.57cwt
 93kgs / 1.83cwt
 75kgs / 1.47cwt
 201kgs / 3.94cwt
 369kgs / 7.25cwt
 3300kgs / 64.82cwt



165
£36,949

£1,350

Peugeot Boxer 335 L2S
 110 bhp Tempo Libero 2.2L
 110 bhp
 4/4
 7201mm / 23'7"
 2690mm / 8'10"
 2200mm / 7'2"
 3010mm / 9'10"
 1950mm / 6'5"
 2074mm / 6'10"
 215/70 R15C 109 S
 60 Psi
 65 Psi

N/A

1 x Double
 2074mm x 1247mm
 / 6'10" x 4'1"

Fixed Bed
 1 x Double
 1920mm x 1350mm
 / 6'4" x 4'5"

1850kgs / 36.33cwt
 2000kgs / 39.28cwt
 2000kgs / 39.28cwt
 2938kgs / 57.65cwt
 113kgs / 2.20cwt
 225kgs / 4.42cwt
 224kgs / 4.42cwt
 562kgs / 11.03cwt
 3500kgs / 68.75cwt



175
£36,299

£1,350

Peugeot Boxer 333 L2S
 110 bhp Tempo Libero 2.2L
 110 bhp
 2/2
 7201mm / 23'7"
 2690mm / 8'10"
 2200mm / 7'2"
 3010mm / 9'10"
 1950mm / 6'5"
 2074mm / 6'10"
 215/70 R15C 109 S
 60 Psi
 65 Psi

N/A

1 x Double
 2074mm x 1876mm
 / 6'10" x 6'2" - OR -
 2 x Single
 1876mm x 700mm
 / 6'2" x 2'3"

N/A

1750kgs / 34.38cwt
 1900kgs / 37.32cwt
 2000kgs / 39.28cwt
 2935kgs / 57.65cwt
 93kgs / 1.83cwt
 75kgs / 1.47cwt
 197kgs / 3.86cwt
 365kgs / 7.16cwt
 3300kgs / 64.82cwt



180
£37,449

£1,350

Peugeot Boxer 335 L2S
 110 bhp Tempo Libero 2.2L
 110 bhp
 6/6
 7201mm / 23'7"
 2690mm / 8'10"
 2200mm / 7'2"
 3010mm / 9'10"
 1950mm / 6'5"
 2074mm / 6'10"
 215/70 R15C 109 S
 60 Psi
 65 Psi

1 x Double
 2050mm x 1330mm
 / 6'8" x 4'4"

1 x Double
 1948mm x 1230mm
 / 6'5" x 4'0"

1 x Double
 2074mm x 1365mm
 / 6'10" x 4'5"

1850kgs / 36.33cwt
 2000kgs / 39.28cwt
 2000kgs / 39.28cwt
 2975kgs / 58cwt
 132kgs / 2.59cwt
 375kgs / 7.36cwt
 0kgs / 0cwt
 507kgs / 9.95cwt
 3500kgs / 68.75cwt

Personalising your Elddis Autoquest

Cab Options:

- Upgrade to 130 bhp chassis cab (selected models, factory order only) **£960****
- Walnut dash kit **£99**
- Cab blinds **£379**
- Cab air conditioning **£840****
- Cruise control **£168****
- Bluetooth connectivity **£168****
- Cab passenger airbag **£216****

Motorhome Options:

- Lux pack **£450†**
- Midi (seal) Heki in lieu of standard 400mm rooflight **£139**
- Electronic omnistep in lieu of manual **£299**
- Thatcham category 1 motorhome alarm system **£299**
- Thatcham approved tracker system **£649**
- Witter tow bar **£420**
- Omnivent in lieu of 400mm rooflight **£159**
- Omnivent extractor fan rooflight **£199**
- Memory foam mattress **£99**
- Microwave oven **£169**
- Winter pack **£299†**
- Dual fuel hob in lieu of standard 3 burner gas hob **£129**
- Alternative soft furnishings in Aquaclean® **£275†**
- Luxury day covers for fixed-bed models **£249†**
- Bike rack (2 bikes) **£199**
- Leisure battery **£89**
- Additional shelving pack **£40**



Tia' upholstery standard in Autoquest



Optional 'Assina' Aquaclean® upholstery



Only Elddis motorhomes provide a passenger seatbelt for every designated berth. Think safety, think Elddis!

**Subject to lead times and availability which will be checked at point of order. †See brochure for more details.

All prices are ex-works and include VAT at the prevailing rate of 20%. *Prices exclude recommended on the road charges (delivery charge, PDI, number plates, road fund licence and first registration fee) of £1,350. Prices correct at time of going to print. Elddis is a trademark of The Explorer Group Limited.

The Mass in Running Order includes a tolerance for material variances and an allowance for the Driver, a full tank of fuel, 90% of the water tank and the gas bottles. Maximum User Payload includes Personal Effects, Optional Equipment and the Conventional Load. **Note 1:** Please take care to ensure that you have allowed for the masses of all items you intend to carry in the motorhome. **Note 2:** Warning under no circumstances must the Maximum Technical Permissible Laden Mass of the motorhome be exceeded. **Note 3:** All data is calculated using metric weights and measurements. The imperial figures quoted are conversions thereof. **Note 4:** Care should be taken when loading your motorhome in order to ensure that you do not exceed either the Front or Rear axle maximum weights **Note 5:** Autoquest has a fresh water tank capacity of 90 Litres and a waste water tank capacity of 70 Litres with the exception of the 180 which has a fresh and waste water tank capacity of 70 Litres.



Elddis

2013 Prices & Specifications

RRP

On the Road charge*

Base Vehicle Motorhome Chassis

- Engine Capacity
- Engine power output (BHP)
- No. of Berths / Seats with designated seatbelts
- Exterior Length
- Overall Width including wing mirrors
- Overall Body Width
- Overall Height
- Minimum Headroom
- Interior Width
- Tyre Size
- Tyre Pressure at Psi - Front
- Rear

Front Dinette

Rear Beds

- Maximum Front Axle Weight
- Maximum Rear Axle Weight
- Maximum Towing Limit
- Mass in Running Order (MIRO)
- Personal Effects Payload
- Conventional Load
- Optional Equipment Payload
- Maximum User Payload
- M.T.P.L.M.

215
£43,899

£1,350

Peugeot Boxer 333 L2
110 bhp Tempo Libero
2.2L
110
2 / 2
6467mm / 21'2"
2750mm / 9'0"
2300mm / 7'6"
3010mm / 9'10"
1960mm / 6'5"
2200mm / 7'3"
215/70 R15C 109 S
72 Psi
79 Psi

1 x Double
2124mm x 1337mm / 6'11" x 4'5"
- OR -
2 x Single
1850mm x 735mm / 6'1" x 2'4"

Not Applicable

1750kgs / 34.38cwt
1900kgs / 37.32cwt
2000kgs / 39.28cwt
3060kgs / 60.10cwt
84kgs / 1.65cwt
75kgs / 1.47cwt
281kgs / 5.51cwt
440kgs / 8.64cwt
3500kgs / 68.75cwt

240
£48,999

£1,350

Peugeot Boxer 333 L3
130 bhp Tempo Libero
2.2L
130
2 / 2
7368mm / 24'1"
2750mm / 9'0"
2300mm / 7'6"
3010mm / 9'10"
1960mm / 6'5"
2200mm / 7'3"
215/70 R15C 109 S
72 Psi
79 Psi

Not Applicable

1 x Double
2124mm x 1787mm / 6'11" x 5'10"
- OR -
2 x Single
1880mm x 735mm / 6'2" x 2'4"

1850kgs / 36.33cwt
2000kgs / 39.28cwt
2000kgs / 39.28cwt
3240kgs / 63.64cwt
96kgs / 1.88cwt
75kgs / 1.47cwt
289kgs / 5.67cwt
460kgs / 9.03cwt
3700kgs / 72.67cwt

255
£48,999

£1,350

Peugeot Boxer 335 L3
130 bhp Tempo Libero
2.2L
130
2 / 2
7368mm / 24'1"
2750mm / 9'0"
2300mm / 7'6"
3010mm / 9'10"
1960mm / 6'5"
2200mm / 7'3"
215/70 R15C 109 S
72 Psi
79 Psi

Not Applicable

Fixed Bed
1 x Double
1920mm x 1330mm / 6'4" x 4'5"

1850kgs / 36.33cwt
2000kgs / 39.28cwt
2000kgs / 39.28cwt
3250kgs / 63.83cwt
96kgs / 1.88cwt
75kgs / 1.47cwt
279kgs / 5.48cwt
450kgs / 8.83cwt
3700kgs / 72.67cwt

265
£49,999

£1,350

Peugeot Boxer 335 L3
130 bhp Tempo Libero
2.2L
130
4 / 4
7368mm / 24'1"
2750mm / 9'0"
2300mm / 7'6"
3010mm / 9'10"
1960mm / 6'5"
2200mm / 7'3"
215/70 R15C 109 S
72 Psi
79 Psi

1 x Double
2174mm x 1260mm / 7'1" x 4'2"

Fixed Bed
1 x Double
1920mm x 1330mm / 6'4" x 4'5"

1850kgs / 36.33cwt
2000kgs / 39.28cwt
1650kgs / 32.41cwt
3375kgs / 66.29cwt
114kgs / 2.23cwt
225kgs / 4.42cwt
156kgs / 3.06cwt
475kgs / 9.33cwt
3850kgs / 75.62cwt

All prices are ex-works and include VAT at the prevailing rate of 20%. *Prices exclude recommended on the road charges (delivery charge, PDI, number plates, road fund licence and first registration fee) of £1,350. Prices correct at time of going to print. Elddis is a trademark of The Explorer Group Limited.

The Mass in Running Order includes a tolerance for material variances and an allowance for the driver, a full tank of fuel, 90% of the water tank and the gas bottles and the auxiliary battery. Maximum User Payload includes: Personal Effects, Optional Equipment and the Conventional Load. **Note 1:** Please take care to ensure that you have allowed for the masses of all items you intend to carry in the motorhome. **Note 2:** Warning under no circumstances must the Maximum Technical Permissible Laden Mass of the motorhome be exceeded. **Note 3:** All data is calculated using metric weights and measurements. The imperial figures quoted are conversions thereof. **Note 4:** Care should be taken when loading your motorhome in order to ensure that you do not exceed either the front or rear axle maximum weight. **Note 5:** If used as single beds rather than a double bed, single bed measurements in the 215 are calculated incorporating usage of the front driver and passengers seats. **Note 6:** The double bed in the 240 is measured with the chest of drawers removed. **Note 7:** The maximum height is increased by 100mm when the optional awning is fitted. **Note 8:** All Aspire motorhomes have a fresh and waste water tank capacity of 90 Litres. **Note 9:** All weights are quoted with the optional uprate. The 215 can be plated at 3300kgs and the 240 and 255 can be plated at 3500kgs with the payload reduced by 200kgs.

Personalising your Elddis Aspire

Cab Options:

- Leather cab seats
- Upgrade to 3.5T and 130 bhp (Aspire 215 only)
- Upgrade to 4.0T (Aspire 240 and 255)

RRP
£499
£1920**
£1140**

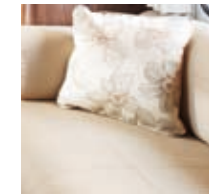
Motorhome Options:

- FREE 200Kg Personal Effects Payload Upgrade (available on all models except Aspire 265)
- Roof rack and ladder
- Witter tow bar
- Leather upholstery (fixed bed models only, in lieu of standard upholstery incl. cab seats)
- Winter pack - includes fridge vent covers and tank heaters (fresh and waste)
- Telemetry link to Alde central heating
- Wraparound rear lounge seating (Aspire 240 only)
- Suretrack® Thatcham approved category 7 tracker (incl. first 12 months subscription)
- Roll out awning 3.5mtr including awning seal (Aspire 215)
- Roll out awning 4.5mtr including awning seal (Aspire 240, 255 and 265)
- Heki 4 electronic rooflight in lieu of Heki 2 (must not be taken in conjunction with air con)
- Air conditioning (must not be taken in conjunction with Heki 4 rain sensor)
- Luxury day covers for fixed-bed models - includes 1 shaped duvet and 2 pillowcases and pillows, 2 co-ordinating scatter cushions and 1 co-ordinating throw
- Sprung mattress in lieu of memory foam mattress
- Bike rack (2 bikes)
- Additional shelving pack

FREE‡
£999
£420
£1,499
£299
£249
£149
£649
£899
£1,099
£499
£1,199
£249
FREE‡
£199
£40



'Botanique' Aquaclean® upholstery as standard



Optional 'Cardinal Mirage' leather upholstery



Only Elddis motorhomes provide a passenger seatbelt for every designated berth. Think safety, think Elddis!



**Subject to lead times and availability which will be checked at point of order. ‡ At point of order.